

# CROP : POTATO – *ATLAS (SEED PRODUCTION)*

Trial carried out in France in 2004

## SITE DETAILS

Trial location	Crop information
56300 SAINT THURIAU North West of France	Variety : <b>Atlas</b> Planting date : 14/04/04 Density of plantation : inter row spacing = 75 cm row spacing = 25 cm Soil type : Loamy clay Irrigation : none

## APPLICATION DETAILS

	Product	Dose rate	Date of spraying	Crop stage at application	Volume of water	Remarks
Application N° 1	AMINOFIT.Xtra	5 l/ha	09/06/04	Early tuber formation (tuber size of a grain of wheat)	150 l/ha	Applied in mixture with fungicides
Application N° 2	AMINOFIT.Xtra	5 l/ha	23/06/04	14 days after first application	150 l/ha	Applied in mixture with fungicides

## MATERIALS AND METHODS

Plot size : 1 ha  
Trial design : 4 samplings per treatment on one row and 3 metres long  
Application method : Foliar spray  
Equipment used : Farmers tractor mounted sprayer equipped with a boom

## DISCUSSION, CONCLUSION

AMINOFIT.Xtra foliar sprayed twice at 14 days interval demonstrated a significant increase on the number of tubers per plant : 9,9 tubers/plant in the treated plots against 8,0 in the control plots.

The size of the tubers is bigger in the control plots because the number of tubers is lower.

The size increase is negative for the seed production. Indeed the target is to produce a large number of tubers per plant with a small calibre.

The higher number of tubers of smaller size in the treated plots leads to a significant yield increase of marketable tubers: + 21% compared to the control plots.

## RESULTS

### Weight of tubers per size measured on 52 plants

Type of record	Weight of tubers size < 28	Weight of tubers size > 28 < 35	Weight of tubers size > 35 < 45	Weight of tubers size > 45 < 55	Weight of tubers size > 55	Total weight of tubers	Total weight of marketable tubers
AMINOFIT.Xtra	530	1010	9275	19590	4550	34955	29875
CONTROL	265	610	6225	17845	10660	35605	24680

Remark : The marketable tubers are from > 28 mm to < 55 mm.

### Number of tubers per size counted on 52 plants

Type of record	Number of tubers size < 28	Number of tubers size > 28 < 35	Number of tubers size > 35 < 45	Number of tubers size > 45 < 55	Number of tubers size > 55	Total number of tubers	Total number of marketable tubers
AMINOFIT.Xtra	75	40	166	201	31	513	407
CONTROL	25	25	118	181	67	416	324

### Number of tubers per plant

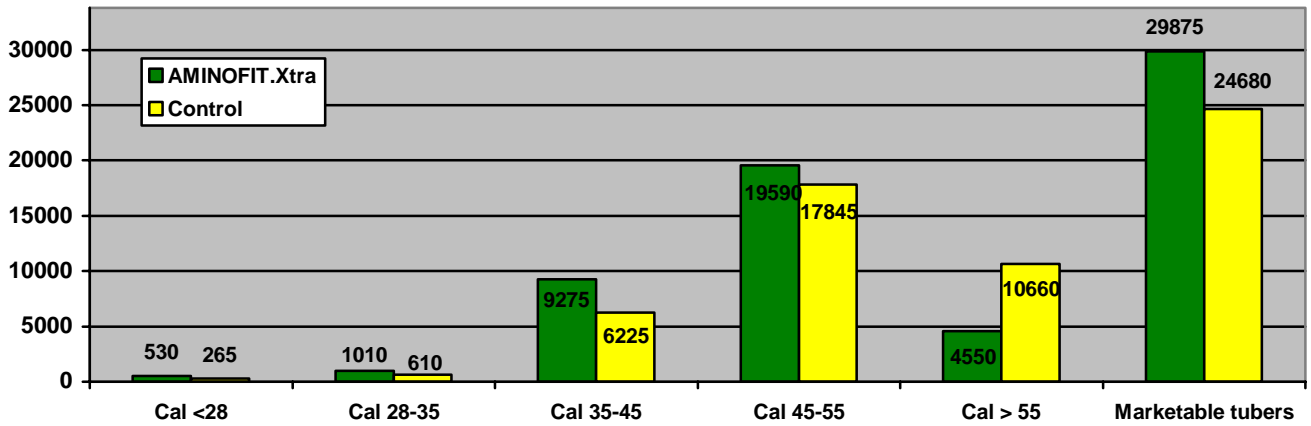
Type of record	Number of tubers size < 28	Number of tubers size > 28 < 35	Number of tubers size > 35 < 45	Number of tubers size > 45 < 55	Number of tubers size > 55	Total number of tubers	Total number marketable tubers
AMINOFIT.Xtra	1.44	0.77	3.19	3.87	0.60	9.87	7.83
CONTROL	0.48	0.48	2.27	3.48	1.29	8.00	6.23

### Percent of dry matter and yield in tons per hectare

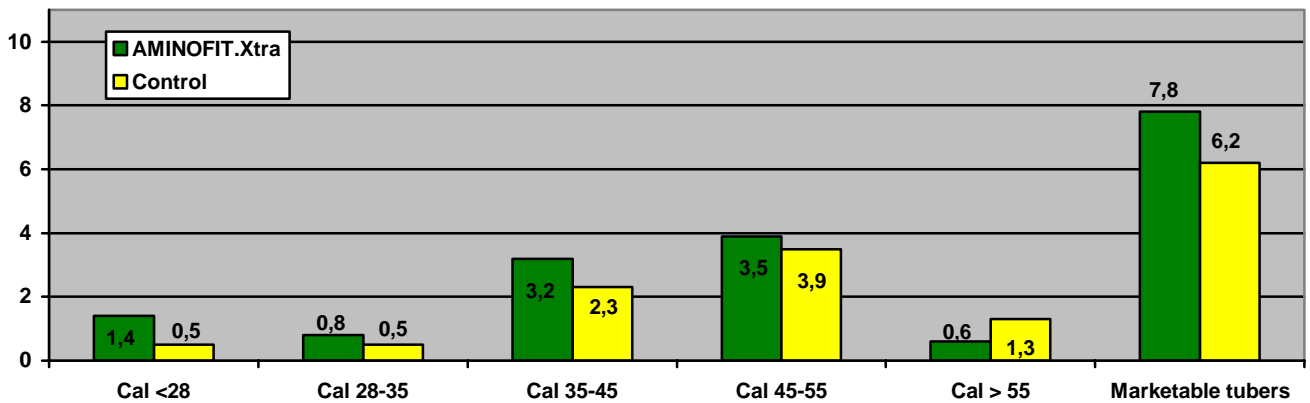
Type of record	% dry matter	Total yield in T/ha, all sizes	Yield of marketable tubers
AMINOFIT.Xtra	19.2	38.84	33.19
CONTROL	18.8	39.56	27.42

# GRAPHS

Weight of marketable tubers in kg



Number of tubers per plant



Yield of marketable tubers (T/ha)

