

CROP : POTATO – *CHARLOTTE (SEED PRODUCTION)*

Trial carried out in France in 2004

SITE DETAILS

Trial location	Crop information
56920 NOYAL PONTIVY North West of France	Variety : Charlotte Planting date : 22/04/04 Density of plantation : inter row spacing = 75 cm row spacing = 25 cm Irrigation : No irrigation Soil type : Loamy clay

APPLICATION DETAILS

	Product	Dose rate	Date of spraying	Crop stage at application	Volume of water	Remarks
Application N° 1	AMINOFIT.Xtra	5 l/ha	08/06/04	Early tuber formation (tuber size of a grain of wheat)	200 l/ha	Applied alone
Application N° 2	AMINOFIT.Xtra	5 l/ha	15/06/04	First application + 8 days	200 l/ha	Applied alone

MATERIALS AND METHODS

Plot size : 1 ha
Trial design : 4 samplings per treatment on one row and 3 metres long per sampling
Application method : Foliar spray
Equipment used : Farmers tractor mounted sprayer equipped with a boom
Fertilisers : 35 m³/ha manure + 500 kg/ha Chlorure of Potassium.
Remarques : Sifted soil

DISCUSSION, CONCLUSION

The potato seed production targets a large number of tubers of small size, inferior to 45 mm.

AMINOFIT.Xtra applied twice at early tuber formation stage has a significant effect on the number of tubers per plant : about + 1 tuber per plant.

These effects lead to a significant yield enhancement : + 2,6%, and to a large increase of marketable tubers : + 9,6%.

RESULTS

Weight of tubers per size in grams

Type of record	Weight of tubers size < 25 mm	Weight of tubers size > 25 < 32	Weight of tubers size > 32 < 35	Weight of tubers size > 35 < 45	Weight of tubers size > 45	Total weight of tubers all sizes	Weight of marketable tubers
AMINOFIT.Xtra	1105	4135	6740	19045	7095	38120	29920
CONTROL	925	3205	5830	18255	8940	37155	27290

Remark : The marketable tubers are from size > 25 mm to < 45 mm.

Number of tubers by size per plot

Type of record	Number of tubers size < 25 mm	Number of tubers size > 25 < 32	Number of tubers size > 32 < 35	Number of tubers size > 35 < 45	Number of tubers size > 45	Total number of tubers	Number of marketable tubers
AMINOFIT.Xtra	122	151	159	277	58	767	587
CONTROL	95	140	146	270	69	720	556

Number of tubers by size per plant

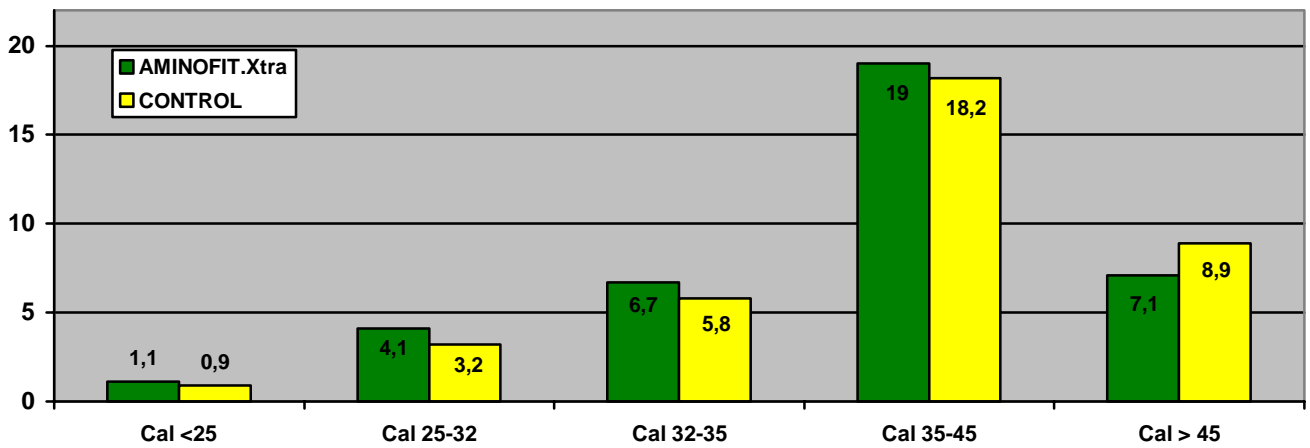
Type of record	Number of tubers size < 25 mm	Number of tubers size > 25 < 32	Number of tubers size > 32 < 35	Number of tubers size > 35 < 45	Number of tubers size > 45	Total number of tubers	Number of marketable tubers
AMINOFIT.Xtra	2.26	2.80	2.94	5.13	1.07	14.2	10.87
CONTROL	1.73	2.55	2.65	4.91	1.25	13.09	10.11

Percent dry matter and yield/hectare

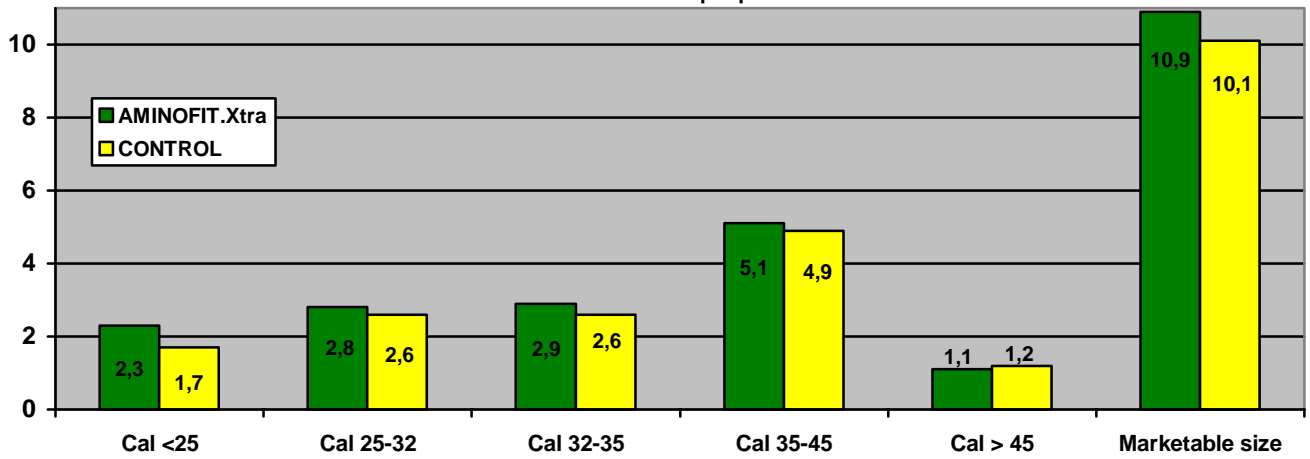
Type of record	% dry matter	Yield in T/ha of tubers all sizes	Yield in T/ha of marketable tubers
AMINOFIT.Xtra	19.6	42.3	33.2
CONTROL	19.8	41.3	30.3

GRAPHS

Weight of tubers per size



Number of tubers per plant



Yield of marketable tubers (T/ha)

