

# CROP : POTATO – *DAISY (SEED PRODUCTION)*

Trial carried out in France in 2004

## SITE DETAILS

Trial location	Crop information
56920 NOYAL PONTIVY North West of France	Variety : <b>Daisy</b> Planting date : <b>27/04/04</b> Density of plantation : inter row spacing = 75 cm row spacing = 25 cm Irrigation : No irrigation Soil type : Clay loam

## APPLICATION DETAILS

	Product	Dose rate	Date of spraying	Crop stage at application	Volume of water	Remarks
Application N° 1	AMINOFIT.Xtra	5 l/ha	11/06/04	Early tuber formation (tuber size of a grain of wheat)	200 l/ha	Applied alone
Application N° 2	AMINOFIT.Xtra	5 l/ha	18/06/04	First application + 7 days	200 l/ha	Applied alone

## MATERIALS AND METHODS

Plot size : 1 ha  
Trial design : 4 samplings per treatment on one row and 3 metres long per sampling  
Application method : Foliar spray  
Equipment used : Farmers tractor mounted sprayer equipped with a boom  
Fertilisers : 35 m3 /ha manure + 500 kg/ha Chlorure of Potassium.  
Soil type : Sifted soil

## DISCUSSION, CONCLUSION

The potato seed production targets a large number of tubers of small size, inferior to 45 mm.

AMINOFIT.Xtra applied twice at early tuber formation stage significantly increased the number of tubers per plant : 10,4 tubers/plant in the treated plots against 9,5 tubers/plant in the control plots.

This increase in numbers of tubers leads to a yield increase of the marketable tubers : + 1 T/ha.

## RESULTS

### Weight of tubers per size in grams on 53 plants

Type of record	Weight of tubers size < 28 mm	Weight of tubers size > 28 < 35	Weight of tubers size > 35 < 45	Weight of tubers size > 45 < 50	Weight of tubers size > 50 < 55	Weight of tubers size > 55	Total weight of tubers all sizes	Weight of marketable tubers
AMINOFIT.Xtra	520	3155	13093	8922	8583	3209	37482	33753
CONTROL	445	2040	11715	9070	9395	2715	35380	32220

Remark : The marketable tubers are from size > 28 mm to < 45 mm

### Number of tubers on 53 plants

Type of record	Number of tubers size < 28 mm	Number of tubers size > 28 < 35	Number of tubers size > 35 < 45	Number of tubers size > 45 < 50	Number of tubers size > 50 < 55	Number of tubers size > 55	Total number of tubers all sizes	Number of marketable tubers
AMINOFIT.Xtra	86	90	194	91	70	20	551	445
CONTROL	65	64	180	92	86	17	504	422

### Number of tubers by size per plant

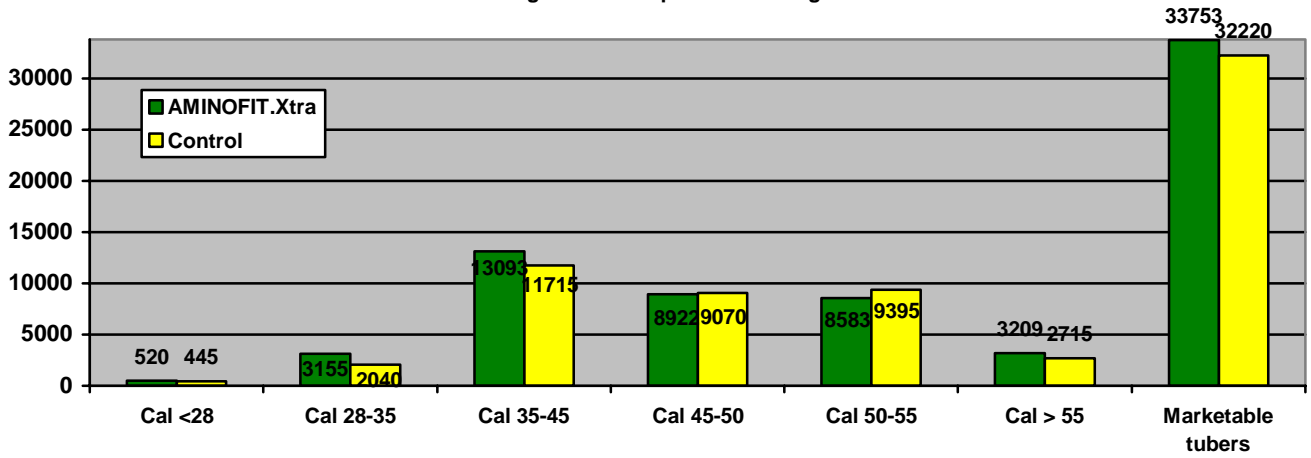
Type of record	Number of tubers size < 28 mm	Number of tubers size > 28 < 35	Number of tubers size > 35 < 45	Number of tubers size > 45 < 50	Number of tubers size > 50 < 55	Number of tubers size > 55	Total number of tubers all sizes	Number of marketable tubers
AMINOFIT.Xtra	1.62	1.70	3.66	1.72	1.32	0.38	10.40	8.40
CONTROL	1.23	1.21	3.40	1.74	1.62	0.32	9.51	7.96

### Percent dry matter and yield/hectare

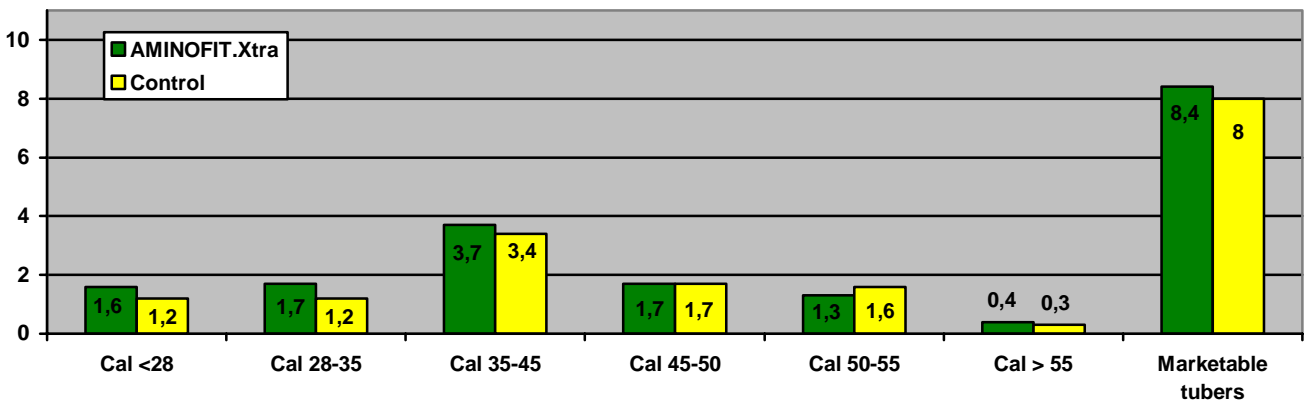
Type of record	% dry matter	Yield in T/ha of tubers all sizes	Yield in T/ha of marketable tubers
AMINOFIT.Xtra	17.8	41.65	37.50
CONTROL	17.8	40.05	36.47

# GRAPHS

Weight of tubers per calibre in kg



Number of tubers per plant



Yield of marketable tubers (T/ha)

